



## Preferred Products Catalog



William Wagner  
[wwagner@blueridgesteelwindows.com](mailto:wwagner@blueridgesteelwindows.com)  
(845)709-2200  
P.O. Box 154  
Butler, TN 37640






The relationship between the opening and the transparent surface have always been one of the challenges of the fenestration industry. OS2 lays down a new standard by combining thermal cut and insulation, with extremely small dimensions and a interesting aesthetic flexibility thanks to the profiles in Corten, steel and burnished brass




**glazing bead**

The small profiles placed in front of the glass to fix it are also design elements of the frame and are produced in the same finishes as the frame



 squared




 triangular



 thin



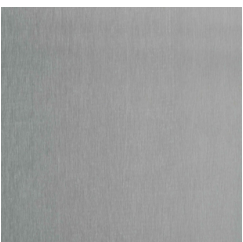
 rounded square

**materials**

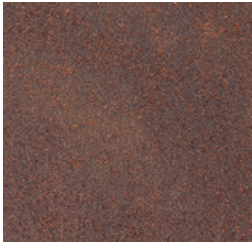
OS2 65 is also available in 4 precious metals in the Bi-material combination, combining two different materials between the interior and the exterior



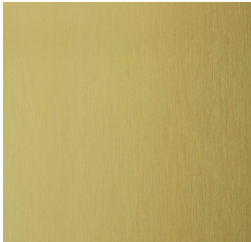
galvanized steel  
varnished



stainless steel  
scotch brite  
burnished



corten steel  
oxidized



brass  
natural  
burnished





## SL 38 Light, Elegance and Comfort

Its slender steel-look design makes the SlimLine 38 high-insulation system the perfect fit for any contemporary project. The durable aluminium windows have been perfected over the years and offer unlimited design freedom thanks to their multiple minimalistic variants.



### PERFORMANCE

#### Insulation

- Thermal insulation (Best) -  $U_f 2.5 \text{ W/m}^2\text{K}$
- Thermal insulation -  $U_w 1.1 \text{ W/m}^2\text{K}$
- Uw Dependencies Single inward opening door:  $U_g 0.6 \text{ W/m}^2\text{K}$ ,  $\psi_i 0.032 \text{ W/mK}$  @1.23x2.18m, 103mm sight line & 24mm glass

#### Comfort

- Air tightness Class 3 (600Pa)
- Water tightness Class 4A (150Pa)
- Wind load resistance Class C3 (1200Pa)
- Acoustics -  $R_w (C;Ctr) 38(-1;-4) \text{ dB}$
- Durability Class 8 (1000000 cycles)

#### Safety & Security

Burglar resistance RC2





## COR Vision Sliding Door

Thermally broken minimalist sliding system that provides maximum luminosity with a minimal aluminum interlock profile. It has an elegant design only 20 mm sightline and offers the possibility of an inlaid closing system and of hiding the frame along the perimeter. Possibility of locking system in the interlock, thus allowing the concealment of the sashes in the frame from a frontal view. Possibility of embedded locking system which facilitates the sashes crossing



**\*Shown with the concealed lock mechanism**



**\*Shown with standard lock rail.**

» **Transmittance**  
Uw from 1.3 (W/m<sup>2</sup>K) EU Metric  
U-Value  $\geq$  0.23 (Btu/h•ft<sup>2</sup>•F) US Imperial  
» **Maximum acoustic insulation**  
Rw = 41 dB  
» **Air permeability**  
(EN 12207): Class 4 EU Metric  
Air leakage  $\geq$  0.3 (cfm/sq ft) US Imperial

» **Water tightness**  
(EN 12208): Class 7A EU Metric  
Class AW Architectural US Imperial  
» **Wind resistance**  
(EN 12210): Class C5 EU Metric  
DP rating  $\geq$  20 to 60 US Imperial

## COR Vision Plus Sliding Door

The greatness of minimalism is reflected in this sliding system of large dimensions with sashes of up to 4 meters, interlock sightline of only 25 mm and frames embedded in the perimeter, allowing for a glazed surface of up to 94%. It has a maximum glazing capacity of 56 mm, offering excellent thermal and acoustic performances. Available with manual (up to 400 kg) or motorized (up to 700 kg) opening system. Additionally, accessibility is favored by the possibility of hiding the rail and even integrating it fully into the floor



» **Transmittance**  
Uw from 0.9 (W/m<sup>2</sup>K) EU Metric  
U-Value  $\geq$  0.16 (Btu/h•ft<sup>2</sup>•F) US Imperial  
» **Maximum acoustic insulation**  
Rw = 43 dB  
» **Air permeability**  
(EN 12207:2000) Class 4 EU Metric  
Air leakage  $\geq$  0.3 (cfm/sq ft) US Imperial

» **Water tightness**  
(EN 12208:2000) Class 7A\* / 9A\*\* EU Metric  
Class AW Architectural US Imperial  
» **Wind resistance**  
(EN 12210:2000) Class C3\* / C4\*\* EU Metric  
DP rating  $\geq$  20 to 60 US Imperial